



# Test Report

Report No. A223014320310101

Page 1 of 14

**Company Name** YANGZHOU YANGJIE ELECTRONIC TECHNOLOGY CO., LTD.  
**shown on Report**  
**Address** NO.6 HEYE WEST ROAD,HANJIANG DISTRICT,YANGZHOU, CHINA

The following sample(s) and sample information was/were submitted and identified by/on the behalf of the applicant

CTI Sample ID	Sample Name(s)	Material
001	Module	银色金属
002		白色固体
003		透明软固体
004		高温焊片
005		--
006		--
007		--
008		--
009		--
010		--
011		--

Sample Received Date Mar. 31, 2023  
 Testing Period Mar. 31, 2023 to Apr. 20, 2023

**Test Requested** As specified by client, to test Lead (Pb), Cadmium (Cd), Mercury (Hg), Hexavalent Chromium (Cr(VI)), Polybrominated Biphenyls (PBBs), Polybrominated Diphenyl Ethers (PBDEs), Phthalates (DBP, BBP, DEHP, DIBP) in the submitted sample(s).

**Test Method/Test Result(s)** Please refer to the following page(s).



Approved by



Date

Apr. 21, 2023

 Chen kaimin  
 Lab Manager

No. R475311936

 Centre Testing International Pinbiao(Shanghai) Co., Ltd.  
 Inspection & Testing Services

No.1351, Wanfang Road, Minhang District, Shanghai, China

# Test Report

Report No. A223014320310101

Page 2 of 14

\*\*\*\*\*

## Conclusion

<b>Tested Sample</b>	<b>According to standard/directive</b>	<b>Result</b>
Submitted Sample	RoHS Directive 2011/65/EU with amendment (EU) 2015/863	PASS

\*\*\*\*\*

PASS means that the results shown on the report comply with the limits set by RoHS Directive 2011/65/EU with amendment (EU) 2015/863.

# Test Report

Report No. A223014320310101

Page 3 of 14

## Test Method

Tested Item(s)	Test Method	Measured Equipment(s)
Lead (Pb)	IEC 62321-5:2013	ICP-OES
	Refer to IEC 62321-5:2013	
Cadmium (Cd)	IEC 62321-5:2013	ICP-OES
	Refer to IEC 62321-5:2013	
Mercury (Hg)	IEC 62321-4:2013+AMD1:2017 CSV	ICP-OES
	Refer to IEC 62321-4:2013+AMD1:2017 CSV	
Hexavalent Chromium (Cr(VI))	IEC 62321-7-1:2015	UV-Vis
	IEC 62321-7-2:2017 and/or determination of Total Chromium by IEC 62321-5:2013	UV-Vis/ICP-OES
Polybrominated Biphenyls (PBBs)	IEC 62321-6:2015	GC-MS
Polybrominated Diphenyl Ethers (PBDEs)	IEC 62321-6:2015	GC-MS
Phthalates (DBP, BBP, DEHP, DIBP)	IEC 62321-8:2017	GC-MS

## Test Result(s)

Tested Item(s)	Result			MDL	Limit
	001	002	003		
Lead (Pb)	N.D.	11 mg/kg	N.D.	2 mg/kg	1000 mg/kg
Cadmium (Cd)	N.D.	N.D.	N.D.	2 mg/kg	100 mg/kg
Mercury (Hg)	N.D.	N.D.	N.D.	2 mg/kg	1000 mg/kg
Hexavalent Chromium (Cr(VI))	--	N.D.	N.D.	8 mg/kg	1000 mg/kg
	N.D.▼	--	--	0.10 $\mu\text{g}/\text{cm}^2$ (LOQ)	1000 mg/kg

Tested Item(s)	Result			MDL	Limit
	004	005	006		
Lead (Pb)	902259 mg/kg*	N.D.	N.D.	2 mg/kg	1000 mg/kg
Cadmium (Cd)	N.D.	N.D.	N.D.	2 mg/kg	100 mg/kg
Mercury (Hg)	N.D.	N.D.	N.D.	2 mg/kg	1000 mg/kg
Hexavalent Chromium (Cr(VI))	--	--	--	8 mg/kg	1000 mg/kg
	N.D.▼	N.D.▼	N.D.▼	0.10 $\mu\text{g}/\text{cm}^2$ (LOQ)	1000 mg/kg

# Test Report

Report No. A223014320310101

Page 4 of 14

Tested Item(s)	Result			MDL	Limit
	007	008	009		
Lead (Pb)	N.D.	N.D.	38 mg/kg	2 mg/kg	1000 mg/kg
Cadmium (Cd)	N.D.	N.D.	N.D.	2 mg/kg	100 mg/kg
Mercury (Hg)	N.D.	N.D.	N.D.	2 mg/kg	1000 mg/kg
Hexavalent Chromium (Cr(VI))	--	N.D.	--	8 mg/kg	1000 mg/kg
	N.D.▼	--	N.D.▼	0.10 µg/cm <sup>2</sup> (LOQ)	1000 mg/kg

Tested Item(s)	Result		MDL	Limit
	010	011		
Lead (Pb)	72 mg/kg	N.D.	2 mg/kg	1000 mg/kg
Cadmium (Cd)	N.D.	N.D.	2 mg/kg	100 mg/kg
Mercury (Hg)	N.D.	N.D.	2 mg/kg	1000 mg/kg
Hexavalent Chromium (Cr(VI))	N.D.	--	8 mg/kg	1000 mg/kg
	--	N.D.▼	0.10 µg/cm <sup>2</sup> (LOQ)	1000 mg/kg

Tested Item(s)	Result			MDL	Limit
	002	003	008		
<b>Polybrominated Biphenyls (PBBs)</b>					
Monobromobiphenyl	N.D.	N.D.	N.D.	5 mg/kg	1000 mg/kg
Dibromobiphenyl	N.D.	N.D.	N.D.	5 mg/kg	
Tribromobiphenyl	N.D.	N.D.	N.D.	5 mg/kg	
Tetrabromobiphenyl	N.D.	N.D.	N.D.	5 mg/kg	
Pentabromobiphenyl	N.D.	N.D.	N.D.	5 mg/kg	
Hexabromobiphenyl	N.D.	N.D.	N.D.	5 mg/kg	
Heptabromobiphenyl	N.D.	N.D.	N.D.	5 mg/kg	
Octabromobiphenyl	N.D.	N.D.	N.D.	5 mg/kg	
Nonabromobiphenyl	N.D.	N.D.	N.D.	5 mg/kg	
Decabromobiphenyl	N.D.	N.D.	N.D.	5 mg/kg	

# Test Report

Report No. A223014320310101

Page 5 of 14

Tested Item(s)	Result		MDL	Limit
	010			
<b>Polybrominated Biphenyls (PBBs)</b>				
Monobromobiphenyl	N.D.		5 mg/kg	1000 mg/kg
Dibromobiphenyl	N.D.		5 mg/kg	
Tribromobiphenyl	N.D.		5 mg/kg	
Tetrabromobiphenyl	N.D.		5 mg/kg	
Pentabromobiphenyl	N.D.		5 mg/kg	
Hexabromobiphenyl	N.D.		5 mg/kg	
Heptabromobiphenyl	N.D.		5 mg/kg	
Octabromobiphenyl	N.D.		5 mg/kg	
Nonabromobiphenyl	N.D.		5 mg/kg	
Decabromobiphenyl	N.D.		5 mg/kg	

Tested Item(s)	Result			MDL	Limit
	002	003	008		
<b>Polybrominated Diphenyl Ethers (PBDEs)</b>					
Monobromodiphenyl ether	N.D.	N.D.	N.D.	5 mg/kg	1000 mg/kg
Dibromodiphenyl ether	N.D.	N.D.	N.D.	5 mg/kg	
Tribromodiphenyl ether	N.D.	N.D.	N.D.	5 mg/kg	
Tetrabromodiphenyl ether	N.D.	N.D.	N.D.	5 mg/kg	
Pentabromodiphenyl ether	N.D.	N.D.	N.D.	5 mg/kg	
Hexabromodiphenyl ether	N.D.	N.D.	N.D.	5 mg/kg	
Heptabromodiphenyl ether	N.D.	N.D.	N.D.	5 mg/kg	
Octabromodiphenyl ether	N.D.	N.D.	N.D.	5 mg/kg	
Nonabromodiphenyl ether	N.D.	N.D.	N.D.	5 mg/kg	
Decabromodiphenyl ether	N.D.	N.D.	N.D.	5 mg/kg	

# Test Report

Report No. A223014320310101

Page 6 of 14

Tested Item(s)	Result		MDL	Limit
	010			
<b>Polybrominated Diphenyl Ethers (PBDEs)</b>				
Monobromodiphenyl ether	N.D.		5 mg/kg	1000 mg/kg
Dibromodiphenyl ether	N.D.		5 mg/kg	
Tribromodiphenyl ether	N.D.		5 mg/kg	
Tetrabromodiphenyl ether	N.D.		5 mg/kg	
Pentabromodiphenyl ether	N.D.		5 mg/kg	
Hexabromodiphenyl ether	N.D.		5 mg/kg	
Heptabromodiphenyl ether	N.D.		5 mg/kg	
Octabromodiphenyl ether	N.D.		5 mg/kg	
Nonabromodiphenyl ether	N.D.		5 mg/kg	
Decabromodiphenyl ether	N.D.		5 mg/kg	

Tested Item(s)	Result			MDL	Limit
	002	003	008		
<b>Phthalates (DBP, BBP, DEHP, DIBP)</b>					
Dibutyl phthalate (DBP) CAS#:84-74-2	N.D.	N.D.	N.D.	50 mg/kg	1000 mg/kg
Butyl benzyl phthalate (BBP) CAS#:85-68-7	N.D.	N.D.	N.D.	50 mg/kg	1000 mg/kg
Di-(2-ethylhexyl) phthalate (DEHP) CAS#:117-81-7	N.D.	N.D.	N.D.	50 mg/kg	1000 mg/kg
Diisobutyl phthalate (DIBP) CAS#:84-69-5	N.D.	N.D.	N.D.	50 mg/kg	1000 mg/kg

# Test Report

Report No. A223014320310101

Page 7 of 14

Tested Item(s)	Result		MDL	Limit
	010			
<b>Phthalates (DBP, BBP, DEHP, DIBP)</b>				
Dibutyl phthalate (DBP) CAS#:84-74-2	N.D.		50 mg/kg	1000 mg/kg
Butyl benzyl phthalate (BBP) CAS#:85-68-7	N.D.		50 mg/kg	1000 mg/kg
Di-(2-ethylhexyl) phthalate (DEHP) CAS#:117-81-7	N.D.		50 mg/kg	1000 mg/kg
Diisobutyl phthalate (DIBP) CAS#:84-69-5	N.D.		50 mg/kg	1000 mg/kg

Tested Item(s)	Result		MDL	Limit
	001	004		
<b>Polybrominated Biphenyls (PBBs)</b>				
Monobromobiphenyl	N.D.	N.D.	5 mg/kg	1000 mg/kg
Dibromobiphenyl	N.D.	N.D.	5 mg/kg	
Tribromobiphenyl	N.D.	N.D.	5 mg/kg	
Tetrabromobiphenyl	N.D.	N.D.	5 mg/kg	
Pentabromobiphenyl	N.D.	N.D.	5 mg/kg	
Hexabromobiphenyl	N.D.	N.D.	5 mg/kg	
Heptabromobiphenyl	N.D.	N.D.	5 mg/kg	
Octabromobiphenyl	N.D.	N.D.	5 mg/kg	
Nonabromobiphenyl	N.D.	N.D.	5 mg/kg	
Decabromobiphenyl	N.D.	N.D.	5 mg/kg	

# Test Report

Report No. A223014320310101

Page 8 of 14

Tested Item(s)	Result		MDL	Limit
	001	004		
<b>Polybrominated Diphenyl Ethers (PBDEs)</b>				
Monobromodiphenyl ether	N.D.	N.D.	5 mg/kg	1000 mg/kg
Dibromodiphenyl ether	N.D.	N.D.	5 mg/kg	
Tribromodiphenyl ether	N.D.	N.D.	5 mg/kg	
Tetrabromodiphenyl ether	N.D.	N.D.	5 mg/kg	
Pentabromodiphenyl ether	N.D.	N.D.	5 mg/kg	
Hexabromodiphenyl ether	N.D.	N.D.	5 mg/kg	
Heptabromodiphenyl ether	N.D.	N.D.	5 mg/kg	
Octabromodiphenyl ether	N.D.	N.D.	5 mg/kg	
Nonabromodiphenyl ether	N.D.	N.D.	5 mg/kg	
Decabromodiphenyl ether	N.D.	N.D.	5 mg/kg	

Tested Item(s)	Result		MDL	Limit
	001	004		
<b>Phthalates (DBP, BBP, DEHP, DIBP)</b>				
Dibutyl phthalate (DBP) CAS#:84-74-2	N.D.	N.D.	50 mg/kg	1000 mg/kg
Butyl benzyl phthalate (BBP) CAS#:85-68-7	N.D.	N.D.	50 mg/kg	1000 mg/kg
Di-(2-ethylhexyl) phthalate (DEHP) CAS#:117-81-7	N.D.	N.D.	50 mg/kg	1000 mg/kg
Diisobutyl phthalate (DIBP) CAS#:84-69-5	N.D.	N.D.	50 mg/kg	1000 mg/kg

## Sample/Part Description

No.	CTI Sample ID	Description
1	001	Metal base
2	002	White plastic
3	003	Colorless transparent adhesive
4	004	Silvery metal
5	005	Silvery plating
6	006	Metal base
7	007	Silvery metal wire
8	008	Chip
9	009	Cupreous metal
10	010	White ceramic
11	011	Silvery plating



# Test Report

Report No. A223014320310101

Page 9 of 14

**Remark: The sample(s) had been dissolved totally tested for Lead, Cadmium, Mercury.**

-MDL = Method Detection Limit

-N.D. = Not Detected (<MDL or LOQ)

-mg/kg = ppm = parts per million

-1000 mg/kg = 0.1%

-LOQ = Limit of Quantification, The LOQ of Hexavalent chromium is 0.10  $\mu\text{g}/\text{cm}^2$

-▼The sample is negative for Cr(VI) – The Cr(VI) concentration is below 0.10  $\mu\text{g}/\text{cm}^2$ . The coating is considered a non-Cr(VI) based coating.

-\*=According to the client's statement, the material of the sample(s) fall into exemption items 7(a) according to EU Directive 2011/65/EU: Lead in high melting temperature type solders (i.e. lead-based alloys containing 85 % by weight or more lead).

**-The test result(s) of this report is/are presented in reference to the result(s) that reported in A2230143203101.**

# Test Report

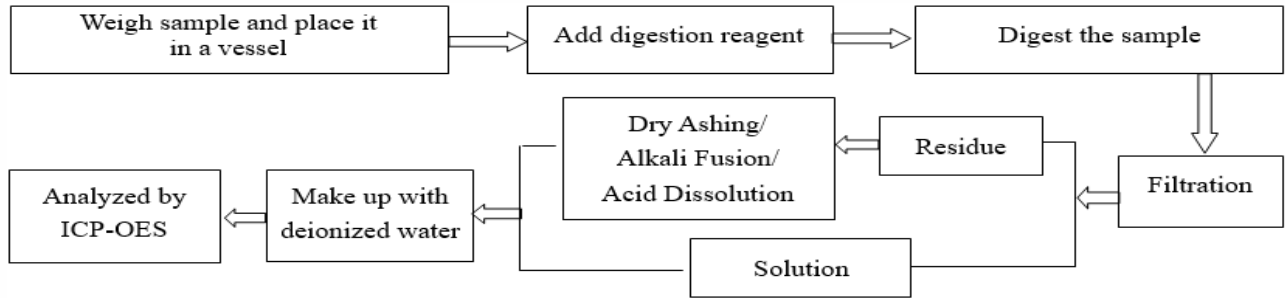
Report No. A223014320310101

Page 10 of 14

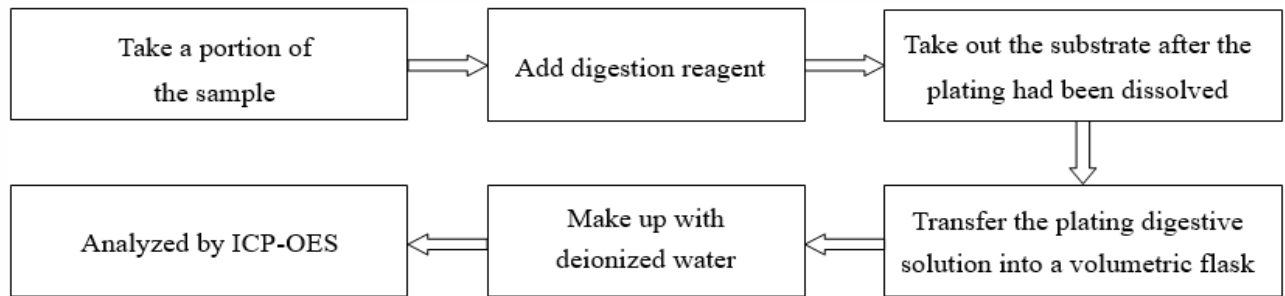
## Test Process

### 1. Cadmium (Cd), Lead (Pb), Chromium(Cr)

#### (1) IEC 62321-5:2013

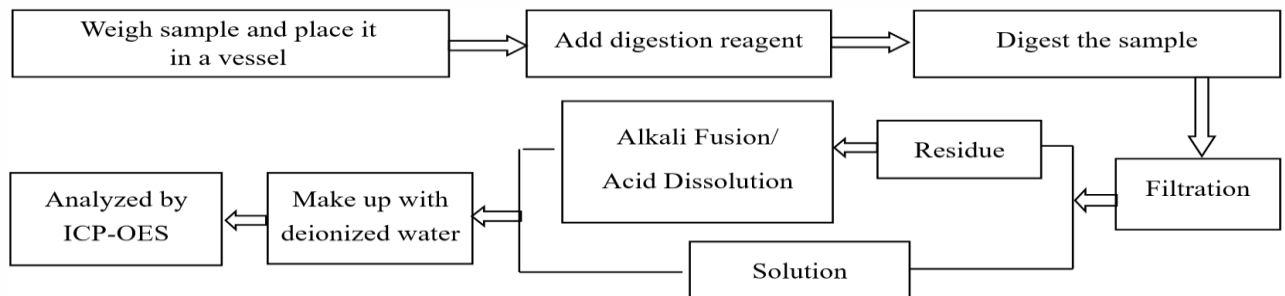


#### (2) Refer to IEC 62321-5:2013

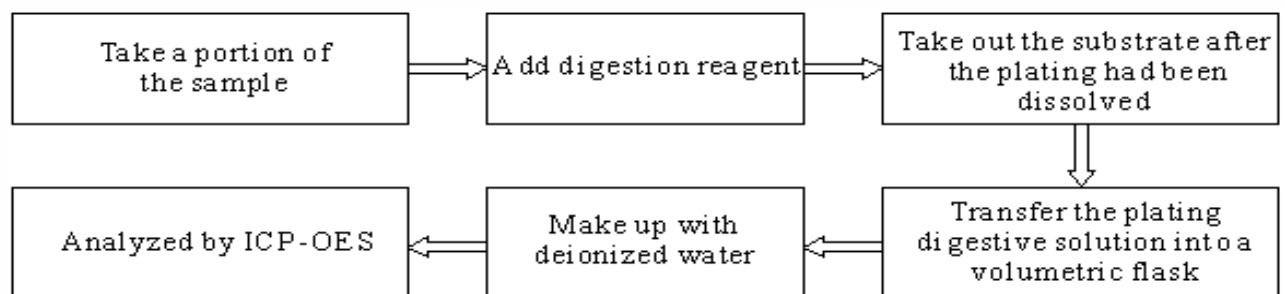


### 2. Mercury (Hg)

#### (1) IEC 62321-4:2013+AMD1:2017 CSV



#### (2) Refer to IEC 62321-4:2013+AMD1:2017 CSV



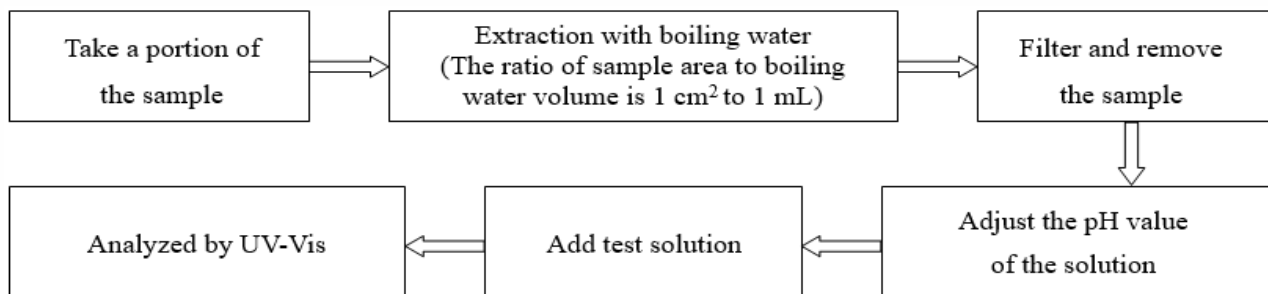
# Test Report

Report No. A223014320310101

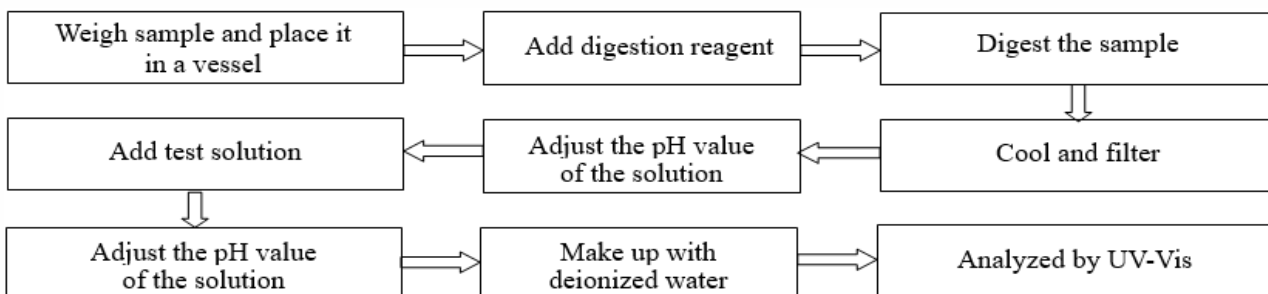
Page 11 of 14

### 3. Hexavalent Chromium (Cr(VI))

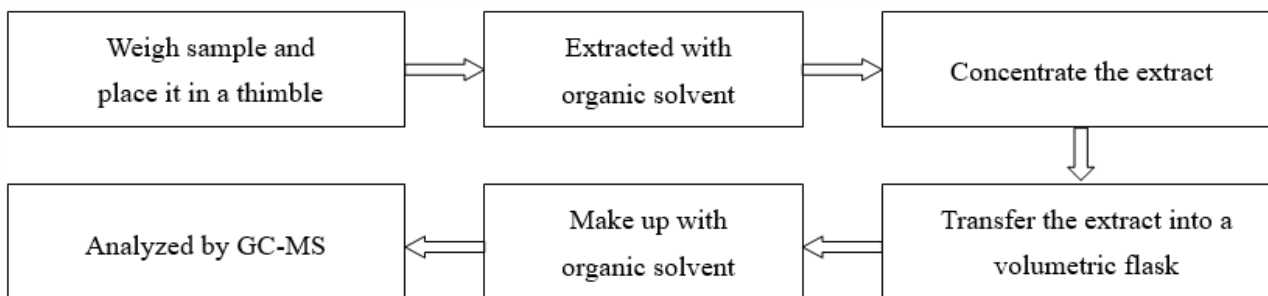
#### (1) IEC 62321-7-1:2015



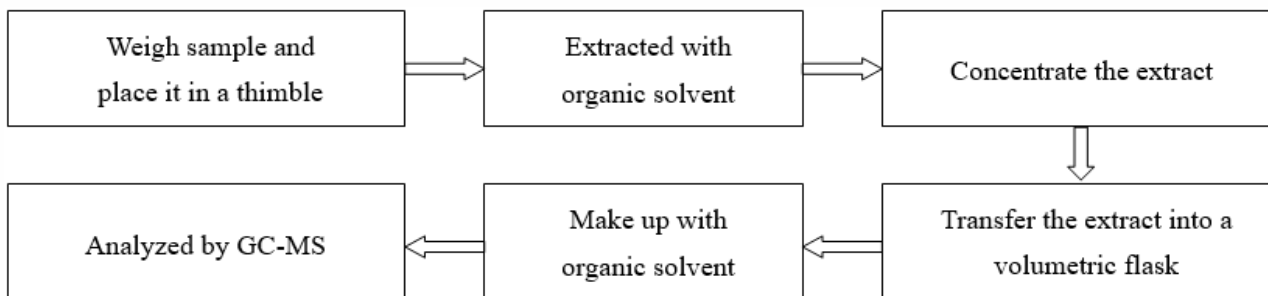
#### (2) IEC 62321-7-2:2017



### 4. Polybrominated Biphenyls (PBBs), Polybrominated Diphenyl Ethers (PBDEs)



### 5. Phthalates (DBP, BBP, DEHP, DIBP)



# Test Report

Report No. A223014320310101

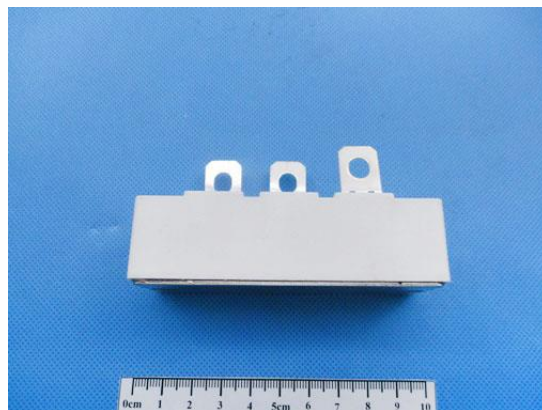
Page 12 of 14

## Photo(s) of the sample(s)

Final Product



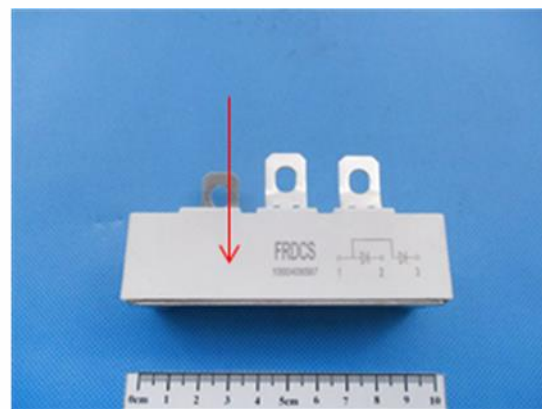
001



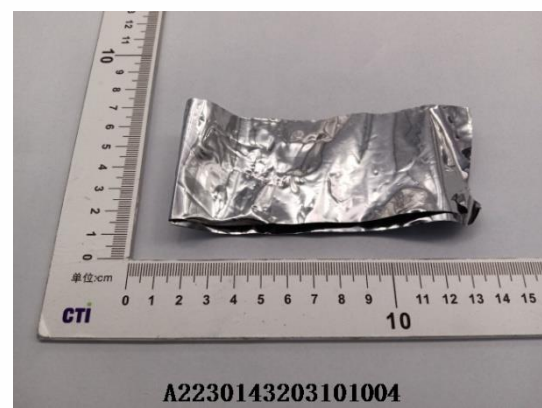
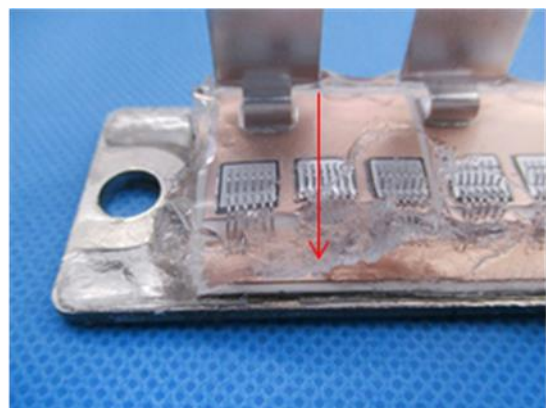
002



003



004

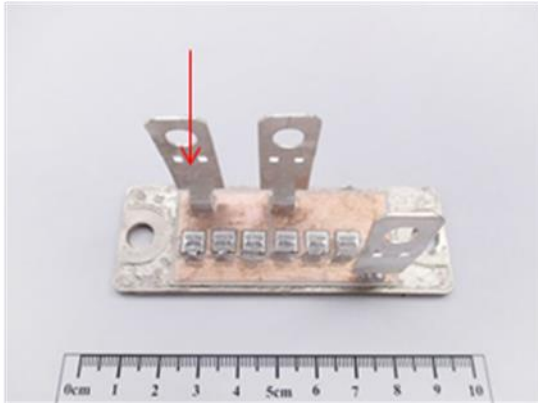


# Test Report

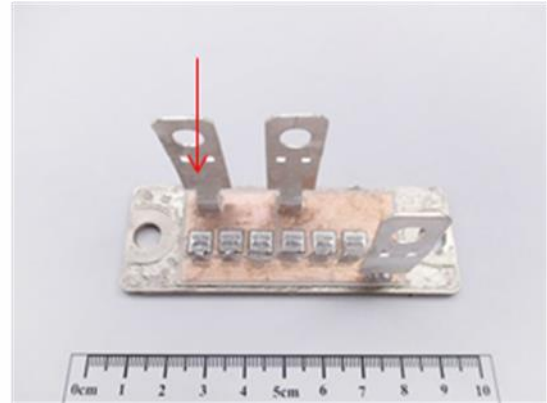
Report No. A223014320310101

Page 13 of 14

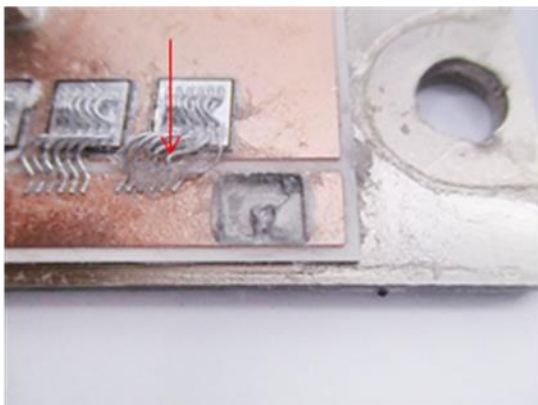
005



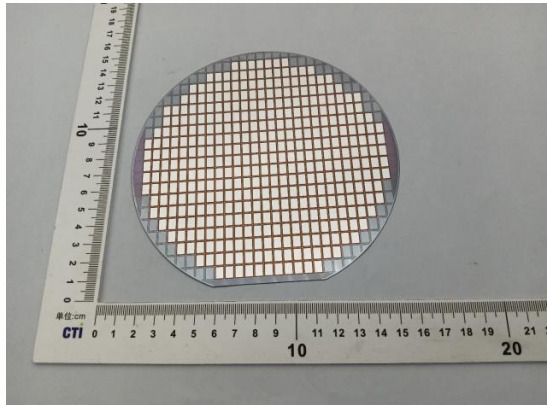
006



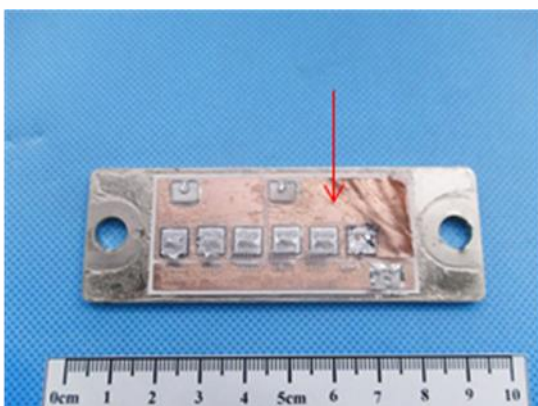
007



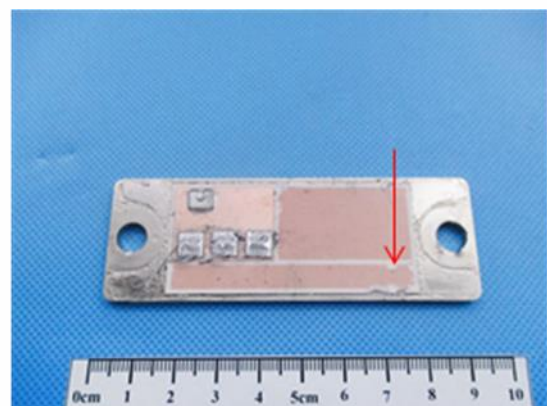
008



009



010



# Test Report

Report No. A223014320310101

Page 14 of 14

011



**Statement:**

1. This report is considered invalid without approved signature, special seal and the seal on the perforation;
2. The Company Name shown on Report and Address, the sample(s) and sample information was/were provided by the applicant who should be responsible for the authenticity which CTI hasn't verified;
3. The result(s) shown in this report refer(s) only to the sample(s) tested;
4. Without written approval of CTI, this report can't be reproduced except in full;
5. In case of any discrepancy between the English version and Chinese version of the testing reports (if generated), the Chinese version shall prevail.

\*\*\* End of Report \*\*\*

## Appendix

### Client Reference Information

D1、D2、DA、M1、M2、NM2、M3、NM3、M4、M5、M7、M8、F3、F4N、F5、F6、FJ、C1、C2、L1、L2、T1、T2、D1N、MT、GJ、F1、F2、F2N、FS、P1、P2、P3、E1、E1A、E2、E2A、M9、T1A、T1D、F1N、T2A、C21、C3、E3、P4

### Client Reference Photo(Non-tested sample)

005



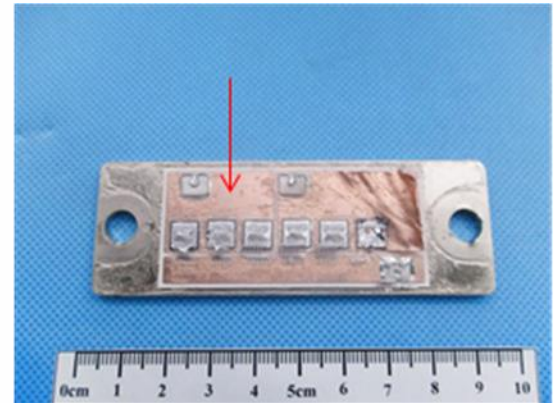
006



009



009



### Statement:

1. The Appendix Information was/were provided by the applicant who should be responsible for the authenticity which CTI hasn't verified.
2. The Appendix Information is/are the supplement(s) for the Report A223014320310101.